

CUSTOM RESIDENTIAL STUDIO OVERVIEW



EVstudio



ABOUT OUR TEAM

WHO WE ARE

Designing Custom Homes can be traced all the way back to the inception of EVstudio and the founding Principle/Architects in 2006. Harnessing all of those years of experience designing and permitting award winning homes across Denver and the Front Range, we can help guide you through the process, from design through construction.

WHAT WE DO

OUR DISCIPLINES.....	4
OUR PROCESS.....	6
<i>DESIGN + BUILDING PROCESS</i>	7
<i>TOOLS</i>	8
CUSTOM RESIDENTIAL SERVICES.....	10
<i>PROJECT EXPERIENCE</i>	12
<i>OLD SQUAW PASS</i>	14
<i>DEADMAN GULCH</i>	16
<i>SILVER ROCK MANOR</i>	18
<i>ORCHARD HOUSE</i>	20
<i>FEHR RESIDENCE</i>	22
CONTACT.....	24



OUR DISCIPLINES

OUR DISCIPLINES

AN INTEGRATED APPROACH

When seeking unparalleled home design, look for a multi-disciplinary approach by professionals that go above and beyond the ordinary: EVstudio. Our Custom Residential Studio delivers design excellence that fulfills your vision, achieved through a keen eye for land use, building performance, and practical engineering. Our design and engineering creatives expertly blend form and function to craft a house where you can live and thrive.



ARCHITECTURE

Designing Your Home's Custom Look, Feel, and Personality.

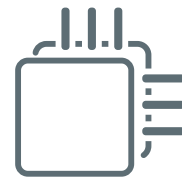
EVstudio exists to bring your vision to life. As a full-service architecture firm with integrated engineering services, we help you create designs that work in the real world, and that are as functional as they are visually arresting. The result is a custom residence as unique as the people who call it home.



CIVIL ENGINEERING

Aligning Your Vision with the Land.

Our civil engineering team does it all—home siting, driveway design, drainage, and more—and works to make the most out of your land's potential, allowing for harmony between the land and your home.



STRUCTURAL ENGINEERING

Designing the Bones and Roots.

Our dedicated structural engineers balance performance and cost to maximize your budget. Their close collaboration with architects ensures that every design iteration you see is one that can be built.



MEP ENGINEERING

Perfecting the Unseen.

With MEP engineers coordinating across disciplines, every home system can be tailored to meet your sustainability goals, with possibilities such as solar power, geothermal heating, or greywater reclamation.

OUR PROCESS

DESIGN + BUILDING PROCESS

HOW WE DO IT ALL IN DESIGN, PLANS, & INTO CONSTRUCTION

We take an integrated approach to blending your needs and aesthetics, prospective site, and code requirements, with the creative and practical talents of our team. It's a recipe for a well-balanced experience and an incredible home. We keep our clients involved and informed each step of the way. Architectural and engineering staff work side-by-side in-house for most projects, or can complement your own existing design resources. We work with contractors to create quick, easy solutions to problems as they arise. We offer flexible options to take your design to the next level and deliver your drawings faster, given how you prefer to work and how you want your custom home made a reality.

OUR PROCESS FOCUS

- Reviewing your priorities and desires
- Efficient and coordinated communication
- Clear, reasonable delivery times
- Value engineering principles to save time and money
- Consulting from experience and teamwork

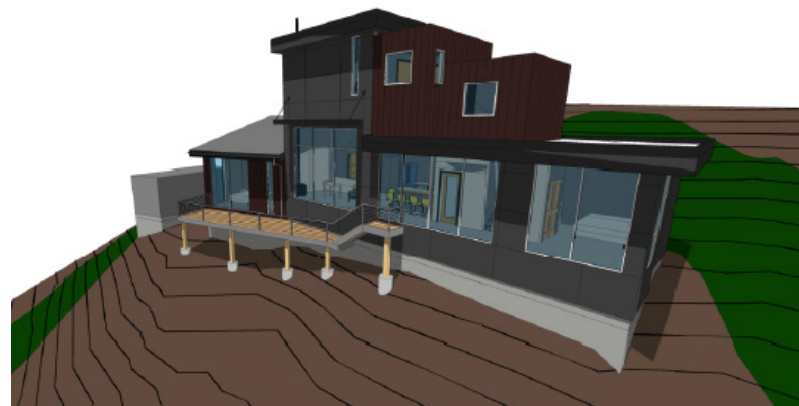
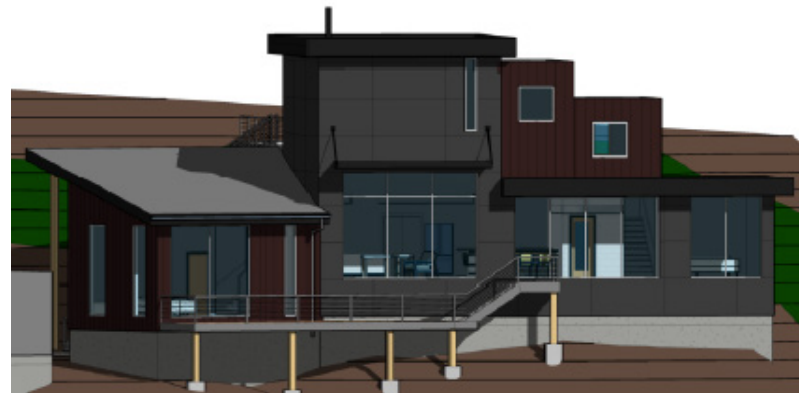
BRING US ON EARLY

Bringing our team in for the full design process gives you the best bang for your buck. We're experts in design and engineering and pinpoint the most valuable areas of the process. Engaging us early allows our team to evaluate the existing site conditions to develop the best concept program. We can share lessons learned with your construction resources, giving you long-term value that mitigates time-consuming changes in the field.

TOOLS

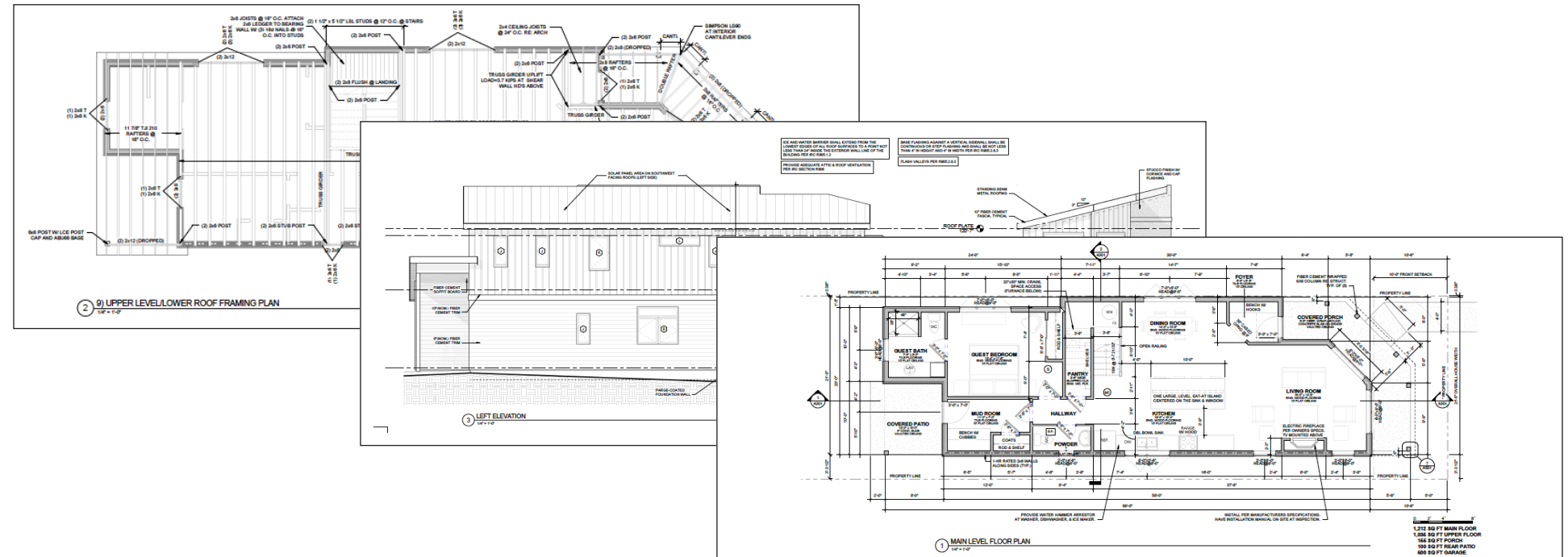
HOW WE DESIGN

Our team uses a variety of software to develop any design in three dimensions. Revit, AutoCAD Civil 3D, Lumion, Forte, and Adobe Suite are all utilized to produce better, well-coordinated, multi-disciplinary designs every time.



REVIT

Revit is a staple in EVstudio's toolbox. It allows for multiple disciplines to design in the same file, eliminating the typical coordination issues that arise when multiple siloed firms work together. Revit also pairs nicely with our rendering program Lumion, allowing our clients the opportunity to better visualize specific design elements in 3D that otherwise may be hard to understand in 2D or black and white.





CUSTOM SERVICES

CUSTOM RESIDENTIAL SERVICES

BRINGING YOUR HOME TO A NEW LEVEL

COMPLETE CUSTOMIZATION

We work with you through every step to ensure each space in your home is designed to meet your needs, now and into the future.

CRAFTING THE RIGHT SYSTEMS

Based on decades of combined experience, we optimize structural (traditional, SIPs, and ICF systems), mechanical, and electrical systems for efficiency and functionality, allowing your home to function on your terms.

BEAUTIFULLY SUSTAINABLE

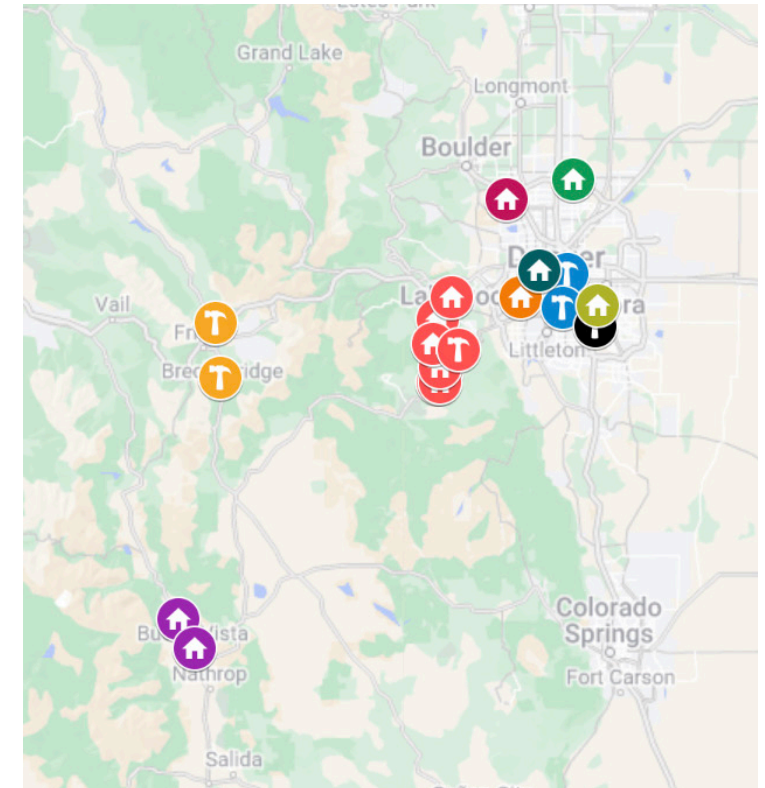
Sustainability is more than a talking point. We engineer every home for year-round comfort and enjoyment, while prioritizing green building practices, materials, and harmony with the land.

EXPERIENCE BETTER SOLUTIONS

Our Custom Residential Studio team are specialists with experience across project types offered by EVstudio. We know the latest in materials, technologies, and systems not typically available at a residential-only design firm, bringing these solutions to your custom home design.

INVESTING IN YOUR FUTURE

We understand the budgetary impacts of designing for an investment property, such as speculative home construction and for-rent housing, and work to achieve the financial goals for the project.



OUR WORK

EVstudio works throughout the Denver Metro area and the Rockies to bring custom homes to life for our clients. Our familiarity with local jurisdictions' varying building codes and permitting nuances lets us keep projects on track for meeting schedule and budget goals.



PROJECT
EXPERIENCE

OLD SQUAW PASS

EVERGREEN, CO

Old Squaw Pass is a two-story home built in Mountain Modern style. EVstudio provided architectural and structural engineering services. This radical renovation preserved the basement and foundation, as well as the stone fireplace and chimney that were original to the property built on an 18.4 acre lot. The interior stairs are framed by a large window wall that showcases the stairs on the approach to the home, highlighted by stained timber roof braces that echo the exposed interior timber trusses.

The exterior is clad exclusively in stone sourced from the property and metal siding to mitigate fire risk. Inside, “warm board” radiant floor heating gives energy-efficient coziness. Custom features incorporated into the design make the home personal and practical, such as a lofted reading area and a firewood box attached to the house that can be loaded from the exterior and accessed from inside.

Location: Evergreen, CO

Stories: 2

Sq Ft: 2,400

Bed: 2

Bath: 3



DEADMAN GULCH

GOLDEN, CO

Nestled in the heart of nature on Lookout Mountain, Deadman Gulch is a modern-contemporary style property. To accommodate the seasonal creek that runs between the garage and house, a metal grate walking bridge was designed and installed. Additional exterior water features and a concrete entry staircase with landscape beds create a dramatic approach to the home. Idyllic views continue within the house with its outdoor kitchen and open living/dining area that leads to a glass-enclosed great room facing east to the Denver skyline.

Efficient use of floor space packs this home with three bedrooms, three bathrooms, a bunk hall, passive solar clerestory, a theater, and a three-car garage. Presented with a unique set of challenges, the entire design team at EVstudio worked to provide architectural, structural, and civil engineering services to elegantly integrate this one-of-a-kind modern-contemporary home with its seasonally changing surroundings.



Location: Golden, CO

Stories: 2

Sq Ft: 4,395

Bed: 3

Bath: 3



SILVER ROCK MANOR

EVERGREEN, CO

Located on a large, gently sloping lot with a breathtaking southern view, Silver Rock Manor is an authentic Tuscan-style home complete with porte-cochere, entry court, and a three-story circular staircase. Luxury finishes and custom wood cabinetry were a collaborative effort between stone masons, timber craftsmen, and interior finish carpenters that include the owner and his family. This highly personalized home includes a full working commercial woodshop and hidden owner's retreat. To make full use of the sunny location, an active solar PV system was installed.

This complex three-story property required EVstudio to use commercial development methods for design approach and team coordination, complete with MEP scope. Additionally, EVstudio provided architectural, structural, and civil engineering services. With construction duration and cost coming in under budget, this financially successful project went on to break the record for highest sales price on any home in Evergreen Parade of Homes!



Location: Evergreen, CO

Stories: 3

Sq Ft: 15,758

Bed: 5

Bath: 8



ORCHARD HOUSE

PAONIA, CO

Situated in a cherry orchard with breathtaking views, Orchard House is a Contemporary/Farmhouse/Modern style design on a 15.64 acre lot. EVstudio provided architecture and structural engineering services for this custom home, which was delivered on time despite being designed without our Custom Residential Studio team visiting the site in person. The home features a cockpit kitchen with a U-shaped island, where chefs can stand and reach a sink, range, and prep areas with ease. In the master bath, a soaking tub was installed in line with a window situated to offer luxurious views of the mountains and orchard. Exposed custom fabricated steel elements are featured throughout the home's design. It's clad in a unique concrete siding, giving an appearance of board-formed concrete. A custom sunshade on the southeast corner of the house was designed to be very thin while offering shade near the home's artist studio. A 15-foot cantilevered canopy extends over an exterior patio, designed to push the material to its limits for aesthetics and function.



Location: Paonia, CO

Stories: 1

Sq Ft: 3,600

Bed: 2

Bath: 3



FEHR RESIDENCE

GOLDEN, CO

Located on a private lot, the Fehr Residence offers repose from city life. This two-story, four bedroom home is designed with cozy features, which include a Rumford wood-burning fireplace, heated four-car garage, workout room, hobby room, and amazing western mountain views. With decorative and structural wood corbels, custom spiral staircase, interior and exterior stone walls, and copper roof rotunda, this traditional-style property is finished with modern flair, including sleek storefront glazing and mitered glass windows that showcase the spiral stairs and give a bright, airy feel.

Aside from architectural work, EVstudio handled structural and civil engineering of the home: All walls were built using engineered lumber LSL studs for enhanced integrity. For a final touch of whimsy, the property is accented with a “hobbit” tower near the home.

Fun fact: This property was previously owned by the former doctor for the band Grateful Dead.



Location: Golden, CO

Stories: 3

Sq Ft: 9,075

Bed: 4

Bath: 4



RUSS AUGUSTINE
RESIDENTIAL STUDIO LEAD
RUSSELL.AUGUSTINE@EVSTUDIO.COM
303.670.7242 X117

EVSTUDIO.COM
5335 W. 48TH AVE. SUITE 300
DENVER, CO 80212
303.670.7242

